



PREX3000 VECTOR INVOLUTE TYPE PNEUMATIC DIFFERENTIAL PRESSURE TRANSMITTERS

MODEL: KKP 11/12/13/14 (HIGH / MEDIUM GAUGE PRESSURE)

The PREX3000 instruments are pneumatic type transmitters which employ a combination of vector balance mechanism and involute mechanism.

The instruments are featured by high resistance against adverse environments, high turn-down ratio, high accuracy, and ease of maintenance.

Standard Specifications

Item	Specifications									
Measuring range(continuously adjustable)	KKP 11: 0-50 to 0-700 kgf/cm ²									
	KKP 12: 0-12.5 to 0-250 kgf/cm ²									
	KKP 13: 0-3.5 to 0-70 kgf/cm ²									
	KKP 14: 0-1.75 to 0-35 kgf/cm ²									
Working pressure, Overload protection, Process connection	Model No.	Working pressure			Overload protection			Process connection		
	KKP11	-1 ~ +700 kgf/cm ²			750 kgf/cm ²			Welded nipple (φ13.6 × 50)		
	KKP12	-1 ~ +300 kgf/cm ²			320 kgf/cm ²			Rc ½ or ¼ internal thread, ½ or ¼ NPT internal thread		
	KKP13	-1 ~ +105 kgf/cm ²			140 kgf/cm ²					
	KKP14	-1 ~ +52.5 kgf/cm ²			70 kgf/cm ²					
Air supply connection	Rc ¼ or ¼ NPT internal thread									
Air supply pressure	1.4 ± 0.14 kgf/cm ²									
Output	0.2-1.0 kgf/cm ² or 3-15 psi									
External load	ID 4 mm × Length 3 m + 20 cm ³ or over									
Air supply capacity	20Nℓ / minute or over, with 50 mmHg change									
Air consumption	5 Nℓ / minute or less (when balanced at output 100%)									
Accuracy, Dead band	Model No.	KKP11		KKP12		KKP13		KKP14		
	Span (kgf/cm ²)	50 to less than 100	100 or over	12.5 to less than 25	25 or over	3.5 to less than 7	7 or over	1.75 to less than 3.5	3.5 or over	
	Accuracy (%FS)	±1	±0.5	±1	±0.5	±1	±0.5	±1	±0.5	
	Dead band (%FS)	0.1		0.1		0.1		0.1		
Operating temperature	Meter body (process fluid): -40 to +120°C									
	Transmitter (ambient): -30 to +80°C									
Operating humidity	10 to 90% RH									
Construction	Dustproof and waterproof, meets				IEC IP54, NEMA Type 3R, JIS F8001 Class 3 splashproof, JIS C0920 rainproof					
Materials	Bellows:		SUS316							
	Wetted parts gasket:		Teflon							
	Cover:		SUS316							
	Transmitter case:		Aluminium alloy							
Finish	Acryl baking finish Color: Light beige (MUNSELL 4Y 7.2 / 1.3)									
Mounting	On vertical or horizontal 2-inch pipe.									
Net weight	Approx. 5.5kg (add 0.8 kg for air-set).									

Optional Specifications

Item	Specifications					
	(unit:kgf/cm ²)					
(1) Suppression and elevation	Model No.	Span	Suppression (max.)	Spring A Elevation (max.)	Spring B High Elevation	Working Pressure (max.)
	KKP11	50-700	-1	650	-	700
	KKP12	12.5-250		225	225 – 287.5	300
	KKP13	3.55-70		60	60 – 101.5	105
	KKP14	1.75-35		30	30 – 50.75	52.5
	(note: elevation + span ≤ maximum operating pressure)					
(2) Air-set (filter and pressure regulator)	Primary pressure:		2-9.9 kgf/cm ²			
	Secondary pressure:		1.4 kgf/cm ²			
	Filter mesh diameter:		5 microns			
	Connections:		Rc ¼ or ¼ NPT internal thread			

Model Number Table

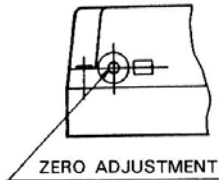
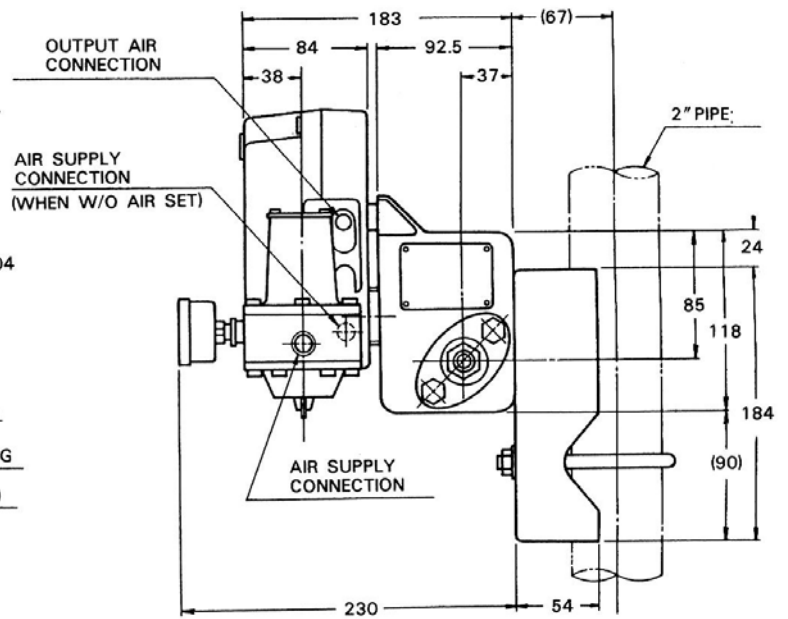
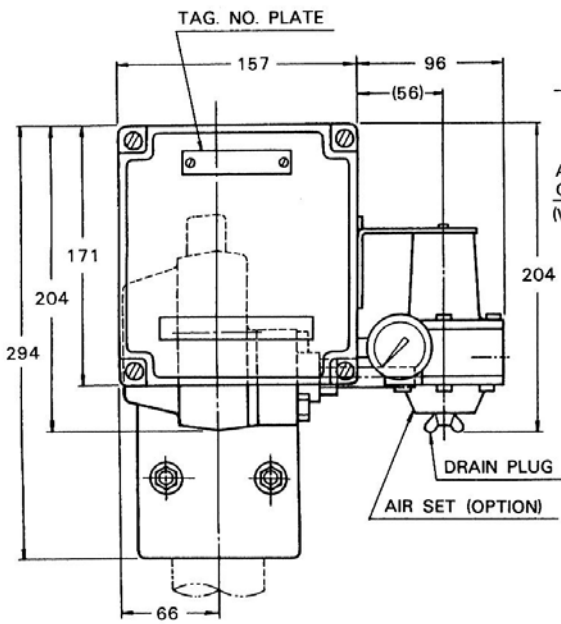
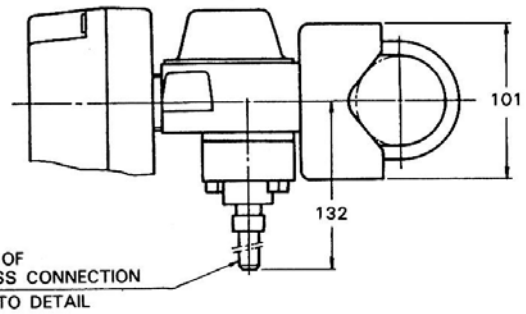
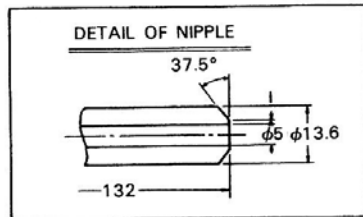
Ex: KKP11-22A1-5.7

Basic Model No.	Cover Mat'l	Bellows Mat'l	Air Piping Connection	Pneumatic Signal. Gauge Scale Unit	Options	Description
KKP 11						0-50 ~ 0-700 kgf/cm ²
KKP 12						0-12.5 ~ 0-250 kgf/cm ²
KKP 13						0-3.5 ~ 0-70 kgf/cm ²
KKP 14						0-1.75 ~ 0-35 kgf/cm ²
	-2					SUS316
		2				SUS316
			A			Rc ¼ internal thread
			B			¼ NPT internal thread
				1		0.2-1.0 kgf/cm ²
				2		3-15 PSI
					-X	No option
					-5	Elevation
					-6	Suppression
					-7	Air-set

Dimensions

(Unit: mm)

MODEL: KKP11



MODEL: KKP12/13/14

